



# GAT MONTHLY MEMBERSHIP PROGRESS REPORT

Results as of: 2/28/2023

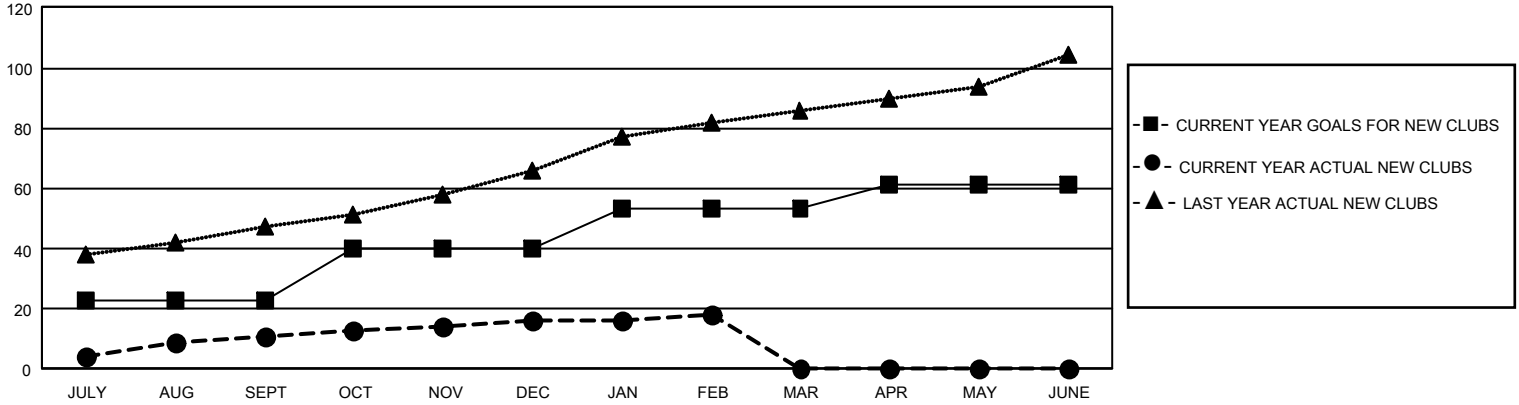
## GMT Constitutional Area 6, Group J

REPORT DOES NOT INCLUDE CLUBS IN UNDISTRICTED AREAS.

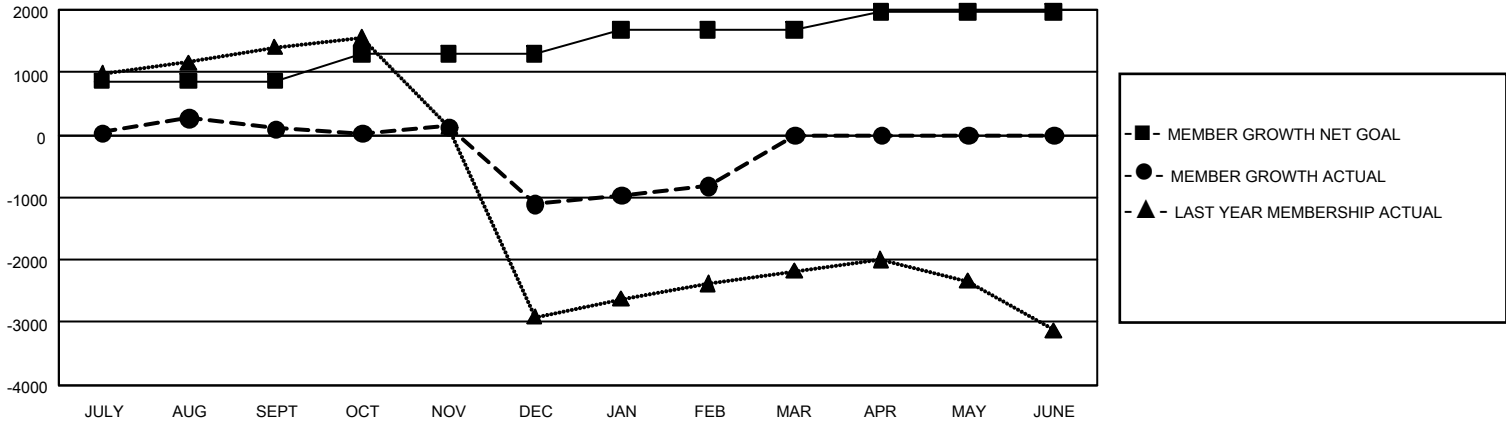
Clubs			
RESULTS FOR 2022-2023			
QUARTER	NEW CLUB GOAL	NEW CLUBS	DROPPED CLUBS
JULY/AUG/SEPT	69	11	103
OCT/NOV/DEC	51	5	21
JAN/FEB/MAR	39	2	8
APR/MAY/JUNE	24	0	0

Members			
RESULTS FOR 2022-2023			
QUARTER	MEMBER GROWTH NET GOAL	MEMBER GROWTH ACTUAL	DROPPED MEMBERS ACTUAL (including transfers)
JULY/AUG/SEPT	860	1,077	872
OCT/NOV/DEC	435	995	2,106
JAN/FEB/MAR	385	583	173
APR/MAY/JUNE	285	0	0

GOALS AND ACTUAL NEW CLUBS CUMULATIVE



GOALS AND ACTUAL MEMBERS CUMULATIVE



<b>DROPPED CLUBS: 132</b>	350 CLUBS OF 943 ADDED 1 OR MORE NEW MEMBERS	<b>GENDER DISTRIBUTION</b>	
		MALE 17,397 (62.09%) FEMALE 10,615 (37.89%) NON BINARY 0 (0.00%) PREFER NOT TO ANSWER 5 (0.02%)	
<b>DROPPED MEMBERS</b>		<a href="#">CLICK HERE FOR CUMULATIVE MEMBERSHIP DATA</a>	TOTAL FAMILY UNIT MEMBERS 18,673
DECEASED 54 CLUB CANCELLED 430 OTHER 2,667 <b>TOTAL 3,151</b>	FAMILY MEMBERS PAYING HALF DUES 11,923		